

## AERIAL PHOTOGRAPH OF THE DEVELOPMENT 發展項目的鳥瞰照片



This blank area falls outside the coverage of the relevant aerial photograph  
鳥瞰照片並不覆蓋本空白範圍

● Location of the Development  
發展項目的位置

Aerial Photograph is/are provided by the the CSDI Portal and intellectual property rights are owned by the Government of the HKSAR.

鳥瞰照片由空間數據共享平台提供，香港特別行政區政府為知識產權擁有人。

Survey and Mapping Office, Lands Department, The Government of HKSAR © Copyright reserved – reproduction by permission only.

香港特別行政區政府地政總署測繪處版權所有，未經許可，不得複製。

Adopted from part of the aerial photograph taken by the Survey and Mapping Office of the Lands Department at a flying height of 6,000 feet, Photo No.E225403C dated 7 August 2024.

摘錄自地政總署測繪處於2024年8月7日在6,000呎飛行高度拍攝之鳥瞰照片，編號為E225403C。

Note :

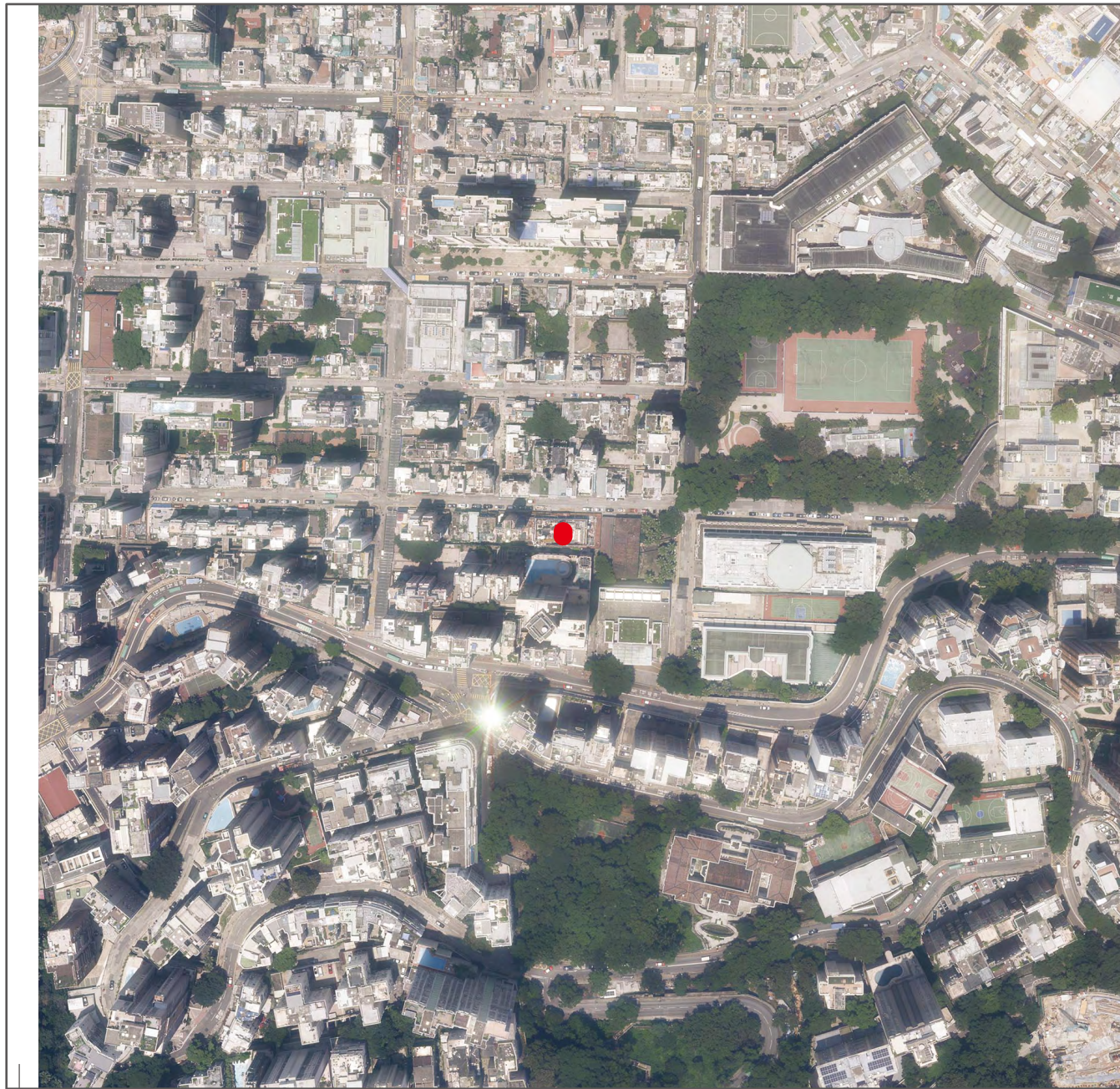
Due to technical reasons, this aerial photograph has shown more than the area required under the Residential Properties (First-hand Sales) Ordinance.

備註：

因技術原因，此鳥瞰照片所顯示的範圍超過《一手住宅物業銷售條例》的規定。



## AERIAL PHOTOGRAPH OF THE DEVELOPMENT 發展項目的鳥瞰照片



Adopted from part of the aerial photograph taken by the Survey and Mapping Office of the Lands Department at a flying height of 6,000 feet, Photo No.E225402C dated 7 August 2024.  
摘錄自地政總署測繪處於2024年8月7日在6,000呎飛行高度拍攝之鳥瞰照片，編號為E225402C。

This blank area falls outside the coverage of the relevant aerial photograph  
鳥瞰照片並不覆蓋本空白範圍

● Location of the Development  
發展項目的位置

Aerial Photograph is/are provided by the the CSDI Portal and intellectual property rights are owned by the Government of the HKSAR.  
鳥瞰照片由空間數據共享平台提供，香港特別行政區政府為知識產權擁有人。

Survey and Mapping Office, Lands Department, The Government of HKSAR © Copyright reserved – reproduction by permission only.  
香港特別行政區政府地政總署測繪處版權所有，未經許可，不得複製。

Note :

Due to technical reasons, this aerial photograph has shown more than the area required under the Residential Properties (First-hand Sales) Ordinance.

備註：

因技術原因，此鳥瞰照片所顯示的範圍超過《一手住宅物業銷售條例》的規定。